



# FALL WINTER 2021

ROCHESTER COLLECTION

24.11.2020

---

*Champion*

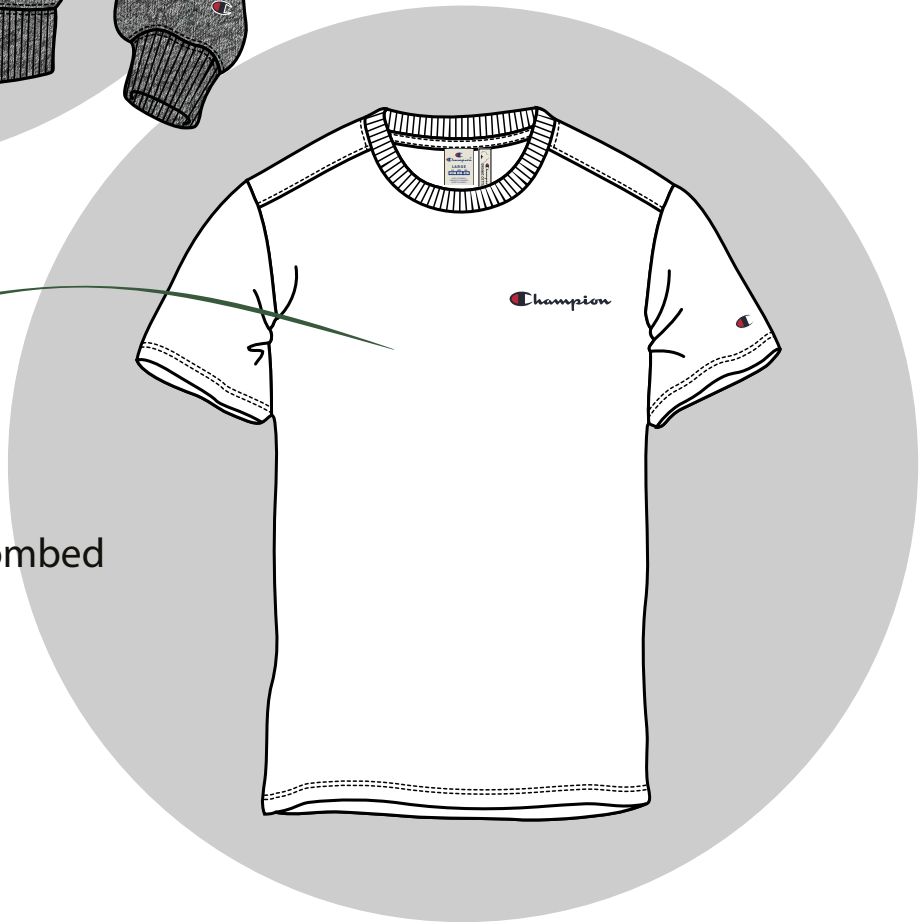
---



**FLEECE:**  
Heavy Organic Cotton Poly Fleece

67% Organic Cotton

33% Recycled Polyester



**JERSEY:**  
Athletic Organic Cotton Jersey Combed

100% Organic Cotton

**LABELING**

70% Organic Cotton - 30% Recycled Polyester



**HANGTAGS**

Avana Recycled Paper 244 gr.



**ROCHESTER, NY, U.S.A.**  
Nel 1919 i fratelli Feinbloom fondarono l'azienda conosciuta ad oggi come "Champion".

**ROCHESTER, NY, U.S.A.**  
In 1919 the Feinbloom brothers established the company that would become known as "Champion".

Questo capo è composto da materiali **ECO SOSTENIBILI**.

Grazie per aver protetto il nostro ambiente!

This garment is made with **ECO FRIENDLY** materials.

Thanks for helping protect our planet!

©2017 Hanesbrands, Inc. All rights reserved.

**WE ARE**  
**100%**  
**ORGANIC**  
**COTTON**

**WE ARE** *Champion*





# PROCESSING



# WHAT'S?

Organic Cotton is generally understood as bio-cotton and it is grown in subtropical countries from non-genetically modified plants. Its production also promotes and enhances biodiversity and biological cycles. This type of cotton has a lower environmental impact than traditional cotton, since it is cultivated using methods that do not require genetic engineering and the use of toxic elements such as pesticides or fertilizers.



NON-ORGANIC COTTON	VS	ORGANIC COTTON
USES 25% OF WORLD'S INSECTICIDES & 9% OF WORLD'S PESTICIDES		SAFE FOR YOUR BABY'S SENSITIVE SKIN
CONTAMINATES GROUND WATER, AIR, BIRDS, FISH, ANIMALS AND ENVIRONMENT		SAFE FOR BABY'S STILL FORMING RESPIRATORY SYSTEM
KILLS 10,000 U.S. FARMERS ANNUALLY & 20,000 WORLDWIDE		BETTER FOR OUR BODIES & PLANET
		SUPPORTS FAIR TRADE PRACTICES

100%

TRUSTED CLEANER

Sustainable Choice Made

**COTTON IS NOT THE CLEAN FIBRE THAT WE THINK IT IS**

COTTON FARMING: ABOUT 30 MILLION TONS OF COTTON ARE PRODUCED EACH YEAR IN AROUND 11 COUNTRIES.

COTTON REPRESENTS NEARLY HALF THE FIBRE USED TO MAKE CLOTHES AND OTHER TEXTILES WORLDWIDE, WITH MUCH OF THE BEST COMING FROM SYNTHETIC PRODUCTS.

OF ALL INSECTICIDES USED GLOBALLY EACH YEAR, THE ESTIMATED AMOUNT USED ON TRADITIONAL COTTON IS 25% MORE THAN ANY OTHER SINGLE CROP.

IT CAN TAKE MORE THAN 10,000 LITRES OF WATER TO PRODUCE 1KG OF COTTON, EQUIVALENT TO A SINGLE T-SHIRT AND PAIR OF JEANS. 75% OF GLOBAL COTTON HARVEST COMES FROM IRRIGATED LAND.

2.4% OF THE WORLD'S CROP LAND IS PLANTED WITH COTTON AND YET IT ACCOUMTS FOR 24% AND 33% OF THE GLOBAL SALES OF INSECTICIDE AND PESTICIDES RESPECTIVELY.

FIVE OF THE TOP NINE PESTICIDES USED ON COTTON IN THE US ARE KNOWN CANCER-CAUSING CHEMICALS.

**THERE ARE SO MANY ALTERNATIVES TO COTTON**  
CONSIDER HEMP, FLAX OR ORGANIC COTTON.

THE USE OF GENETICALLY-MODIFIED (GM) COTTON VARIETIES HAS INCREASED REMARKABLY IN RECENT YEARS REACHING 20% OF THE GLOBAL COTTON CROP AREA IN 2009.

UNSUSTAINABLE COTTON FARMING, WITH MASSIVE INPUTS OF WATER AND PESTICIDES, HAS ALREADY BEEN RESPONSIBLE FOR THE DESTRUCTION OF LARGE SCALE ECOSYSTEMS SUCH AS THE ARAL SEA IN CENTRAL ASIA AND THE DEGRADATING HEALTH AND LIVELIHOODS OF PEOPLE LIVING THERE.

TRUSTED CLEANER

Sustainable Choice Made



**ROCHESTER**

**Champion Logo**



**Champion**





- **FABRIC:** Heavy Organic Cotton Poly Fleece 67% Organic Cotton 33% Poly
- **FABRIC:** Athletic Jersey Combed (180gr) 100% Organic Cotton

- C** COMFORT FIT: TOPS
- AF** AMERICAN FIT: TOPS & SHORT
- R** REGULAR FIT: PANTS
- CS** CUSTOM FIT: TOPS

SIZE RANGE: XS-XXL



- **LOGO THECNIQUE:** Tatami Embroidery





# COLOR CHART



## PANTONE COLOUR REFERENCES



Heavy Organic Cotton Poly Fleece 340gr

CHAMPION LOGO



216470

WHT  
WW001

GRJM  
EM525

NBK  
KK001

NVB  
BS538

CRD  
RS011

AHR  
ES517



WSW  
WW034

CDG  
GS091

DARK  
BS504

DOX  
RS506

BNN  
YS107

TYM  
GS538





Heavy Organic Cotton Poly Fleece 340gr

CHAMPION LOGO



216471

WHT  
WW001



GRJM  
EM525



NBK  
KK001



NVB  
BS538



CRD  
RS011



AHR  
ES517



WSW  
WW034



CDG  
GS091



DARK  
BS504



DOX  
RS506



BNN  
YS107

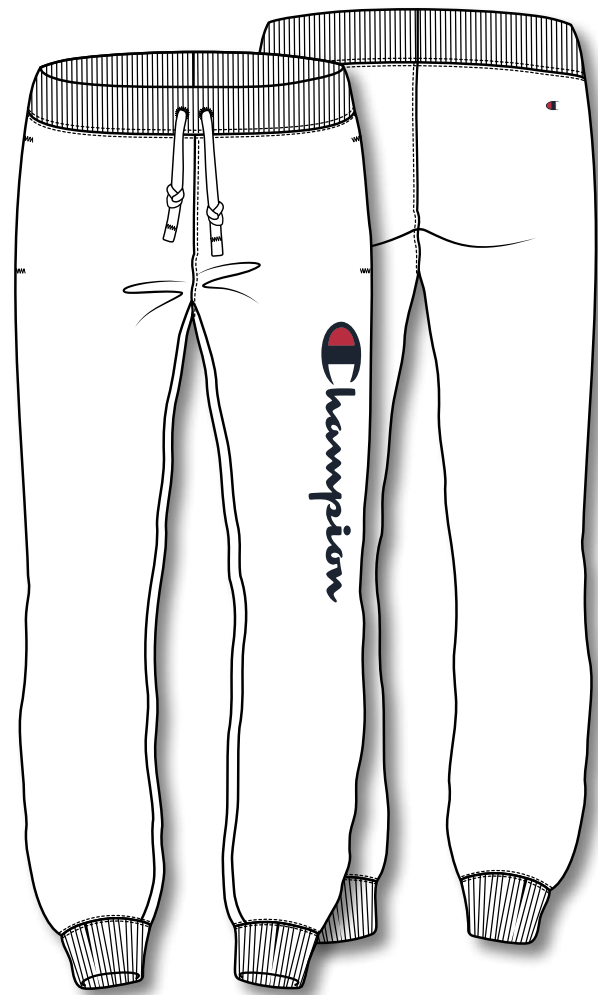


TYM  
GS538



Heavy Organic Cotton Poly Fleece 340gr

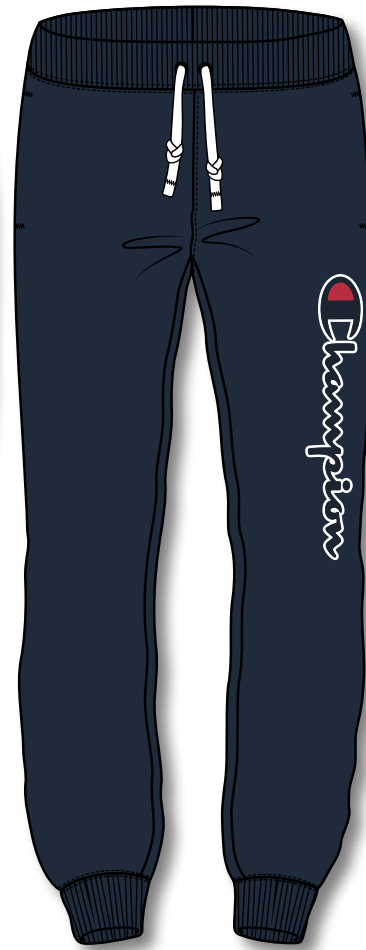
CHAMPION LOGO



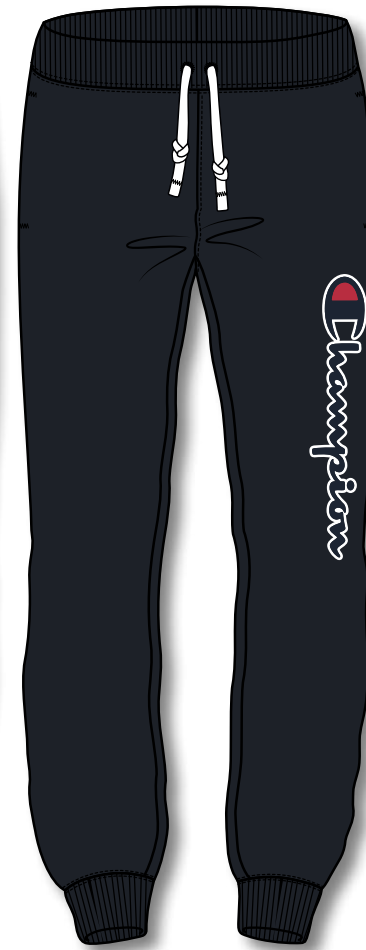
216472 WHT  
WW001



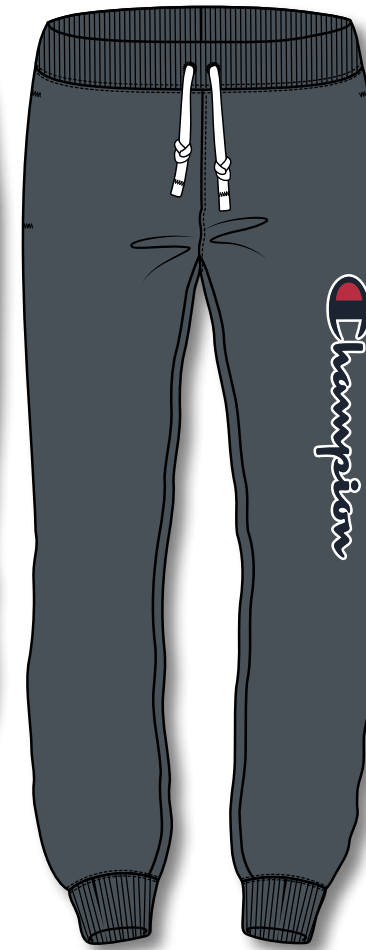
GRJM  
EM525



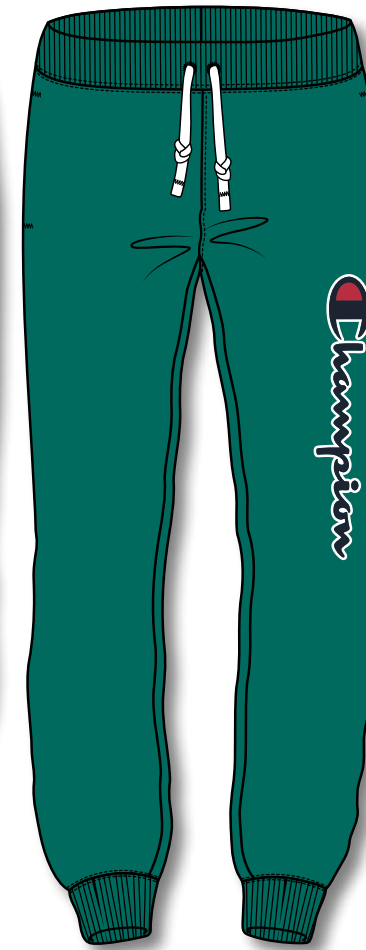
NVB  
BS538



NBK  
KK001



AHR  
ES517



CDG  
GS091



TYM  
GS538





Athletic Organic Cotton jersey Combed 180gr

CHAMPION LOGO



216473

**WHT**  
**WW001**

**GRJM**  
**EM525**

**NBK**  
**KK001**

**NVB**  
**BS538**

**CRD**  
**RS011**

**AHR**  
**ES517**



**WSW**  
**WW034**

**CDG**  
**GS091**

**DARK**  
**BS504**

**DOX**  
**RS506**

**BNN**  
**YS107**

**TYM**  
**GS538**



Athletic Organic Cotton jersey Combed 180gr

CHAMPION LOGO



216474

WHT  
WW001

GRJM  
EM525

NBK  
KK001

NVB  
BS538





Heavy Organic Cotton Poly Fleece 340gr

CHAMPION LOGO



216475

WHT  
WW001

GRJM  
EM525

NBK  
KK001

NVB  
BS538

CRD  
RS011

AHR  
ES517



WSW  
WW034

CDG  
GS091

DARK  
BS504

DOX  
RS506

BNN  
YS107

TYM  
GS538



Heavy Organic Cotton Poly Fleece 340gr

CHAMPION LOGO



216476

WHT  
WW001

GRJM  
EM525

NBK  
KK001

NVB  
BS538

CRD  
RS011

AHR  
ES517



WSW  
WW034

CDG  
GS091

DARK  
BS504

DOX  
RS506

BNN  
YS107

TYM  
GS538





Heavy Organic Cotton Poly Fleece 340gr

CHAMPION LOGO



216477

GRJM  
EM525

NBK  
KK001

NVB  
BS538

TYM  
GS538



216478

GRJM  
EM525

NBK  
KK001

NVB  
BS538

TYM  
GS538





Heavy Organic Cotton Poly Fleece 340gr

CHAMPION LOGO



216483

WSW  
WW034

GRJM  
EM525

NBK  
KK001

NVB  
BS538

DOX  
RS506



216484

WSW  
WW034

GRJM  
EM525

NBK  
KK001

NVB  
BS538

DOX  
RS506



Heavy Organic Cotton Poly Fleece 340gr

CHAMPION LOGO



216479 WSW  
WW034

GRJM  
EM525

NVB  
BS538

NBK  
KK001

AHR  
ES517

DOX  
RS056

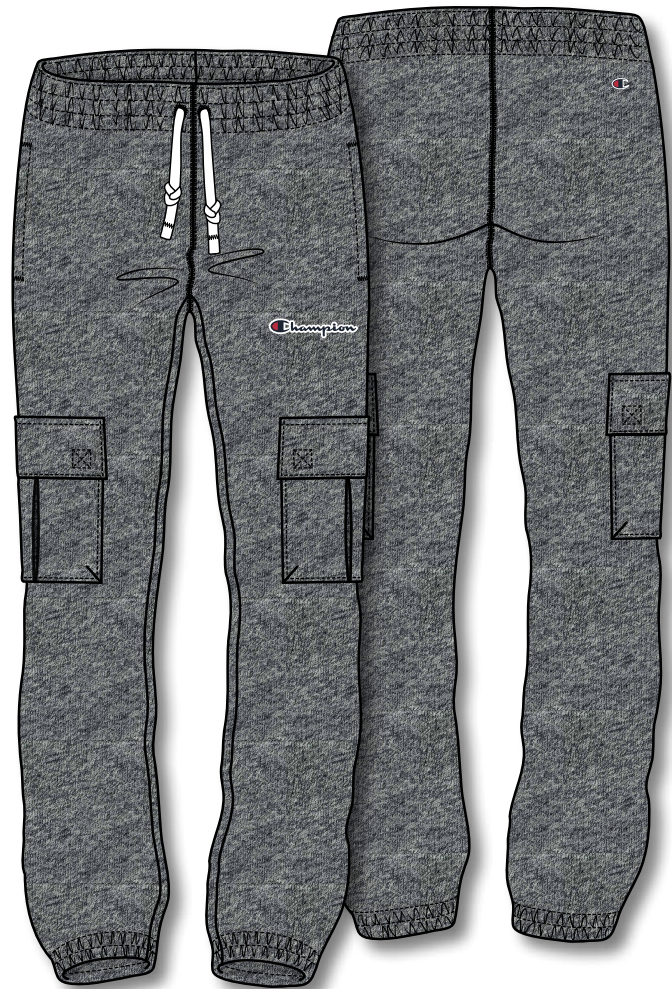
TYM  
GS538





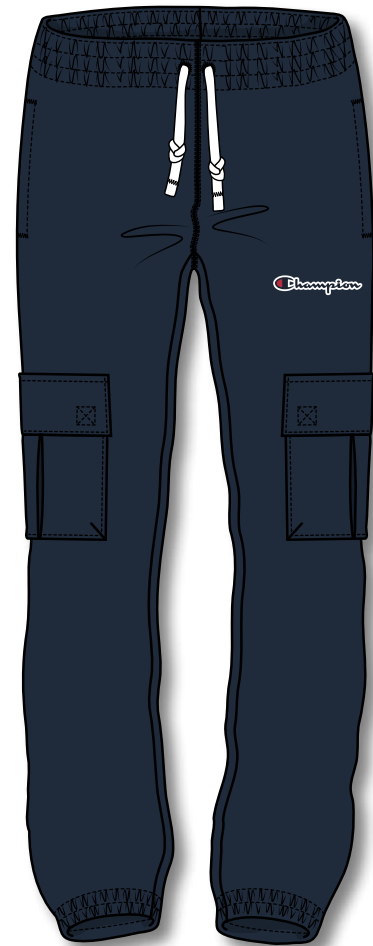
Heavy Organic Cotton Poly Fleece 340gr

CHAMPION LOGO



217268

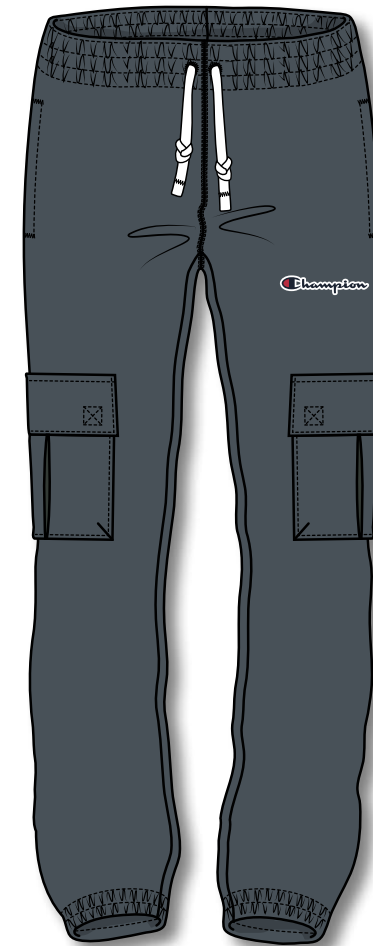
GRJM  
EM525



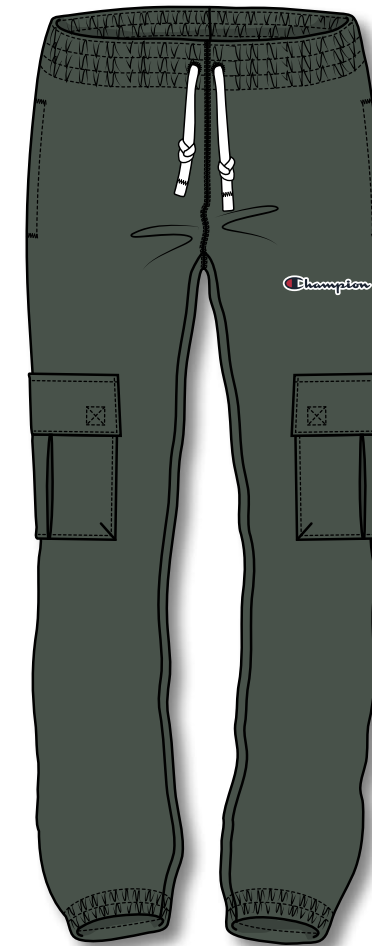
NVB  
BS538



NBK  
KK001



AHR  
ES517



TYM  
GS538





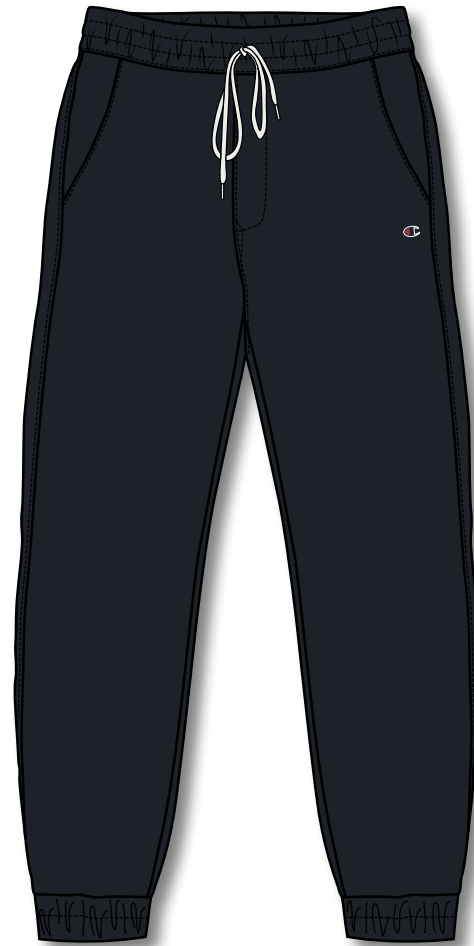
Heavy washed Stretch Cotton Twill 335gr

CHAMPION LOGO

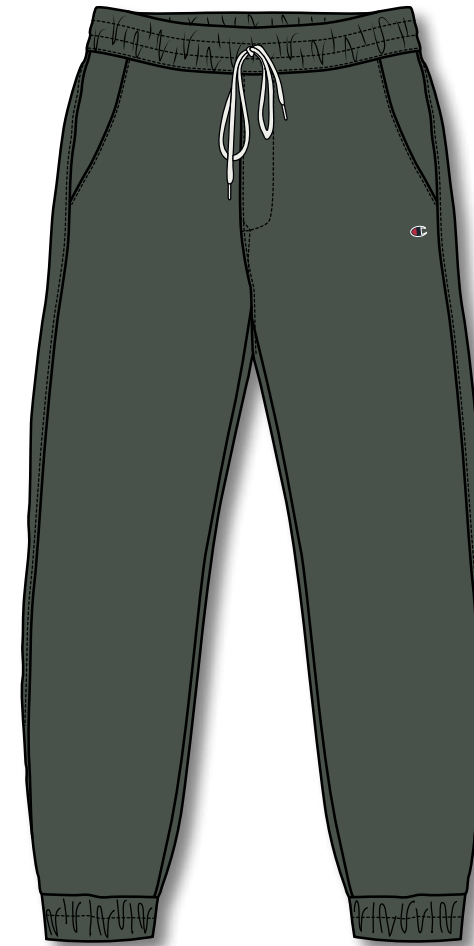


215193

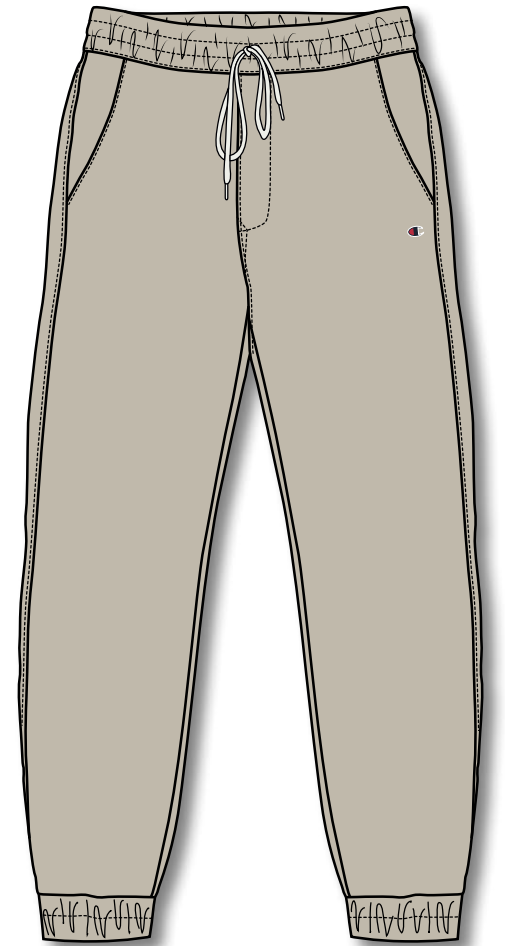
NVB  
BS538



NBK  
KK001



TYM  
GS538



PMG  
MS018



Athletic Organic Cotton jersey Combed 180gr

CHAMPION LOGO



216480

**WHT**  
**WW001**

**GRJM**  
**EM525**

**NBK**  
**KK001**

**NVB**  
**BS538**

**CRD**  
**RS011**

**AHR**  
**ES517**



**WSW**  
**WW034**

**CDG**  
**GS091**

**DARK**  
**BS504**

**DOX**  
**RS506**

**BNN**  
**YS107**

**TYM**  
**GS538**





Athletic Organic Cotton jersey Combed 180gr

CHAMPION LOGO



216481

WHT  
WW001

GRJM  
EM525

NBK  
KK001

NVB  
BS538





- **FABRIC:** Heavy Organic Cotton Poly Fleece 67% Organic Cotton 33% Poly
- **FABRIC:** Athletic Jersey Combed (180gr) 100% Organic Cotton

**C** COMFORT FIT: TOPS

**CS** CUSTOM FIT: TOPS

**SIZE RANGE:** XS-XXL



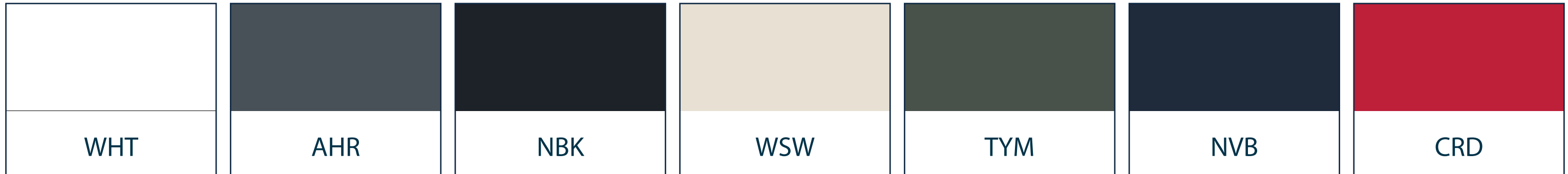
ALLOVER DIRECT PRINT



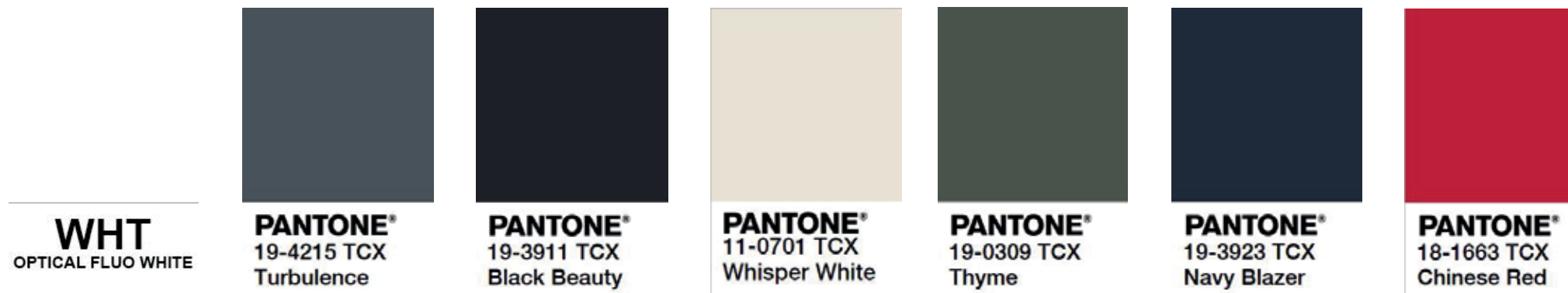
- **LOGO THECNIQUE:** Small Tatami Embroidery for main logo+Allover print



# COLOR CHART



## PANTONE COLOUR REFERENCES



Heavy Organic Cotton Poly Fleece 340gr

CHAMPION LOGO



216485 AHR/WHT ES517

NBK/WSW KK001

TYM/NBK GS538

CRD/WHT RS011

NVB/WHT BS538



216486 AHR/WHT ES517

NBK/WSW KK001

TYM/NBK GS538

CRD/WHT RS011

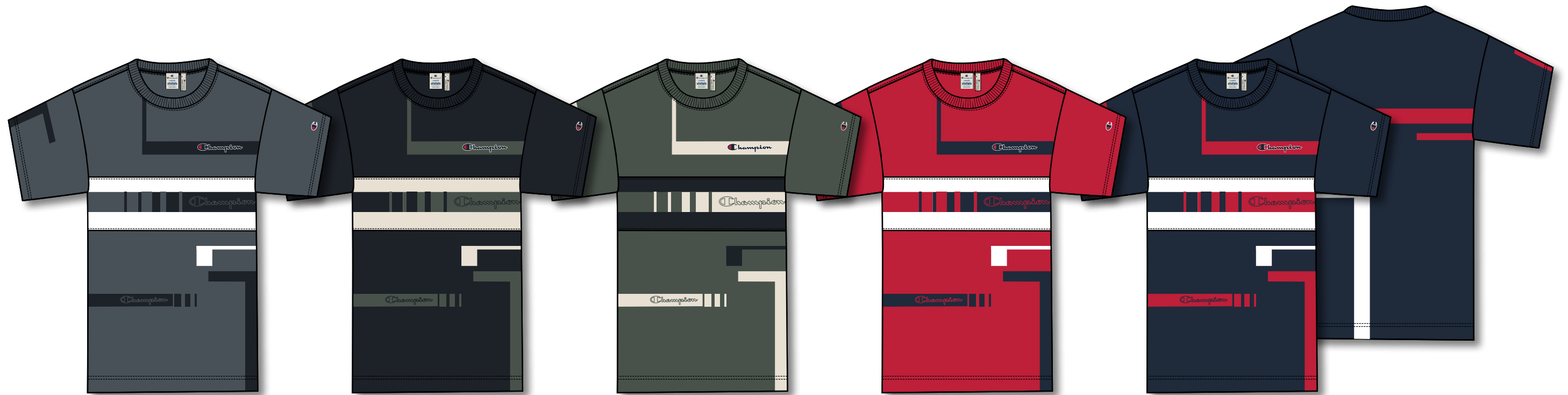
NVB/WHT BS538





Athletic Organic Cotton Jersey Combed 180gr

CHAMPION LOGO



216487

**AHR/WHT**  
**ES517**

**NBK/WSW**  
**KK001**

**TYM/NBK**  
**GS538**

**CRD/WHT**  
**RS011**

**NVB/WHT**  
**BS538**





of the Gods" park. Whatever the basic  
ning requirement, Champion provides a full lines of  
anded workout wear is exactly the same quality  
as that which we provide to our professio



# ROCHESTER

## Graphic Shop

*Champion*

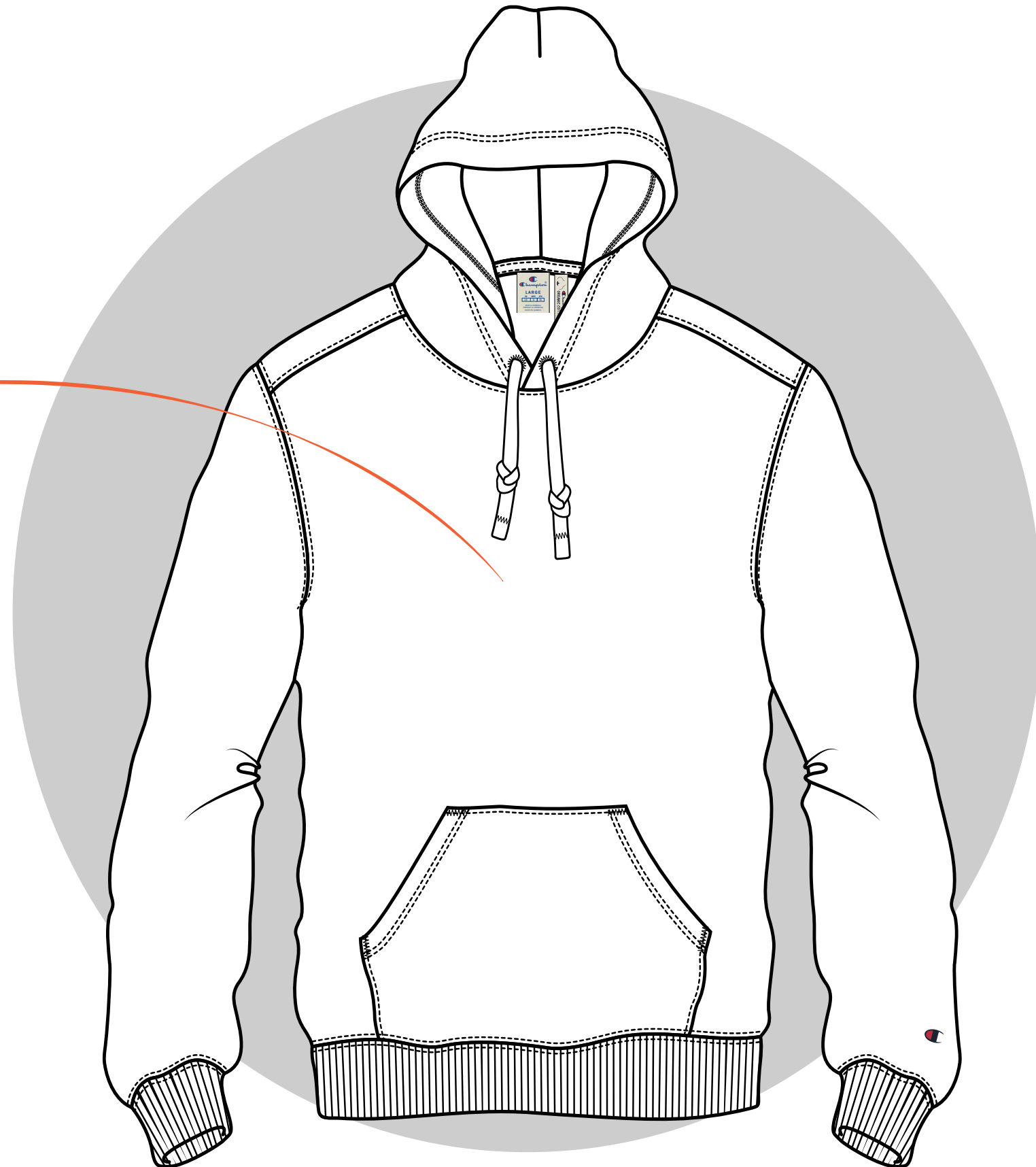
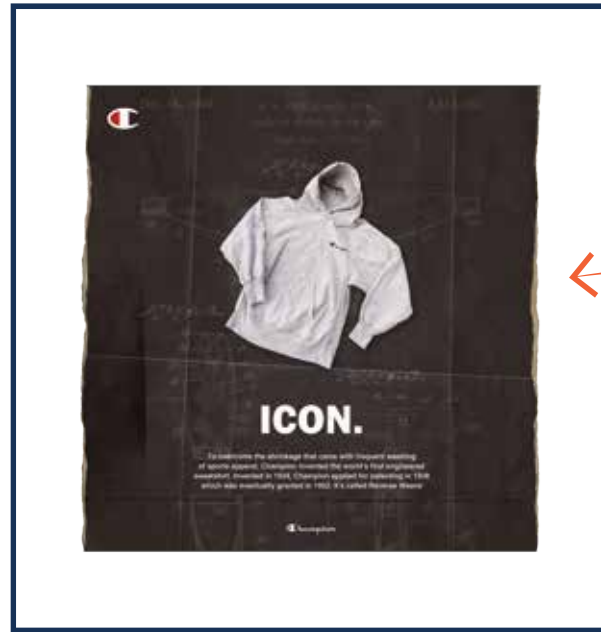




- **FABRIC:** Heavy Organic Cotton Poly Fleece 67% Organic Cotton 33% Poly
- **FABRIC:** Athletic Jersey Combed (180gr) 100% Organic Cotton

**C** COMFORT FIT

**SIZE RANGE:** XS-XXL



- **PRINT TECHNIQUES:** Digital Print and Direct Print

Heavy Organic Cotton Poly Fleece 340gr



WHT  
WW001



GRJM  
EM525



NBK  
KK001

216958

Athletic Organic Cotton jersey Combed 180gr



WHT  
WW001



GRJM  
EM525



NBK  
KK001

216959



WHT  
WW001

216960



GRJM  
EM525



NBK  
KK001





Heavy Organic Cotton Poly Fleece 340gr



216961 WHT WW001

GRJM EM525

NBK KK001

Athletic Organic Cotton jersey Combed 180gr



216962 WHT WW001

GRJM EM525

NBK KK001





Athletic Organic Cotton jersey Combed 180gr

GRAPHIC SHOP



NBK  
KK001



OPW  
WW029



NBK  
KK003



OPW  
WW008



216963 NBK  
KK002



OPW  
WW030



NBK  
KK006



OPW  
WW014





# ROCHESTER

Sportleisure







- **FABRIC:** Heavy Organic Cotton Poly Fleece 67% Organic Cotton 33% Poly
- **FABRIC:** Athletic Jersey Combed (180gr) 100% Organic Cotton

**C** COMFORT FIT: TOPS

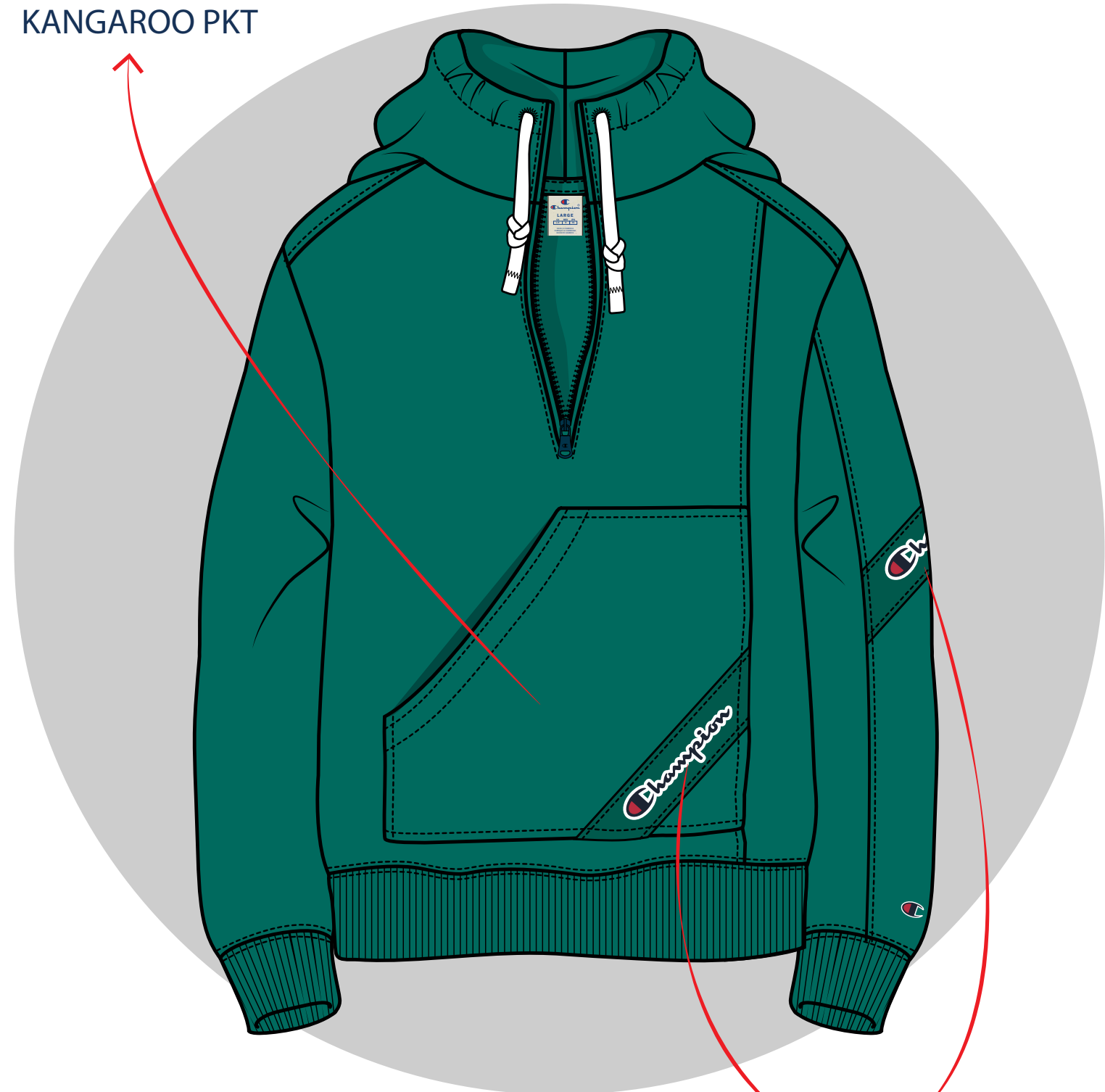
**R** REGULAR FIT: PANTS

**SIZE RANGE:** XS-XXL



- **LOGO THECNIQUE:** Tonal Jaquard Tape

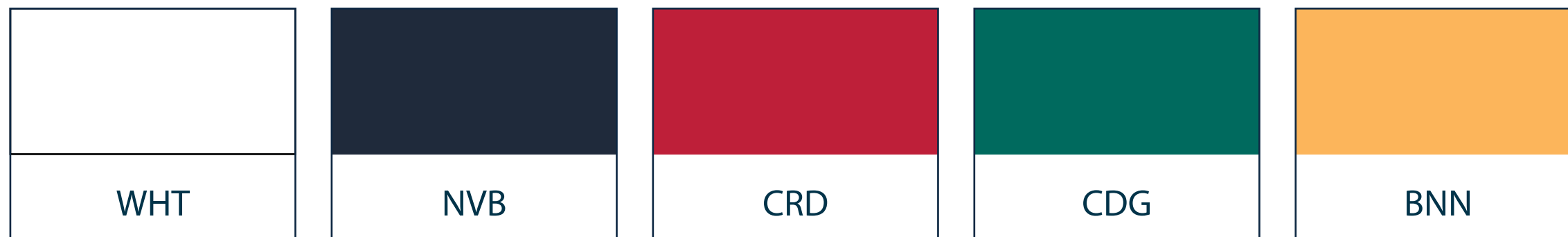
NEW ASIMETRIC KANGAROO PKT



TONAL JAQUARD TAPE  
UNCONVENTIONAL POSITIONING



# COLOR CHART



## PANTONE COLOUR REFERENCES



Heavy Organic Cotton Poly Fleece 340gr

SPORTLEISURE



216549

WHT  
WW001

NVB  
BS538

NBK  
KK001

CRD  
RS011

CDG  
GS091

BNN  
YS107



216550

WHT  
WW001

NVB  
BS538

NBK  
KK001

CRD  
RS011

CDG  
GS091

BNN  
YS107





Heavy Organic Cotton Poly Fleece 340gr



216551

WHT  
WW001

NVB  
BS538

NBK  
KK001

CRD  
RS011

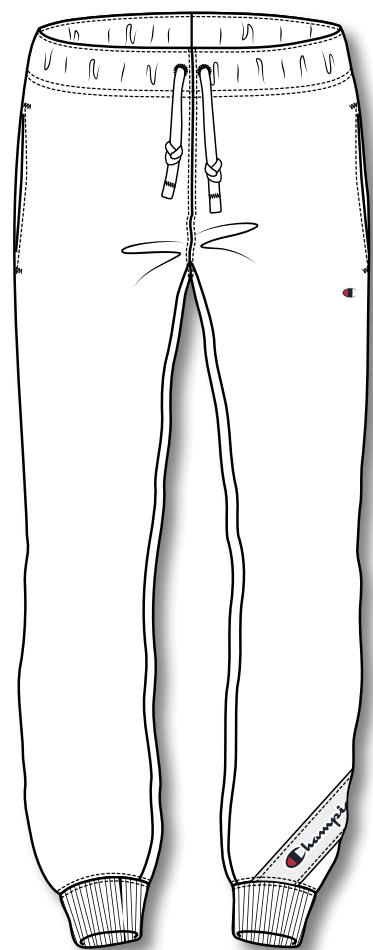
CDG  
GS091

BNN  
YS107

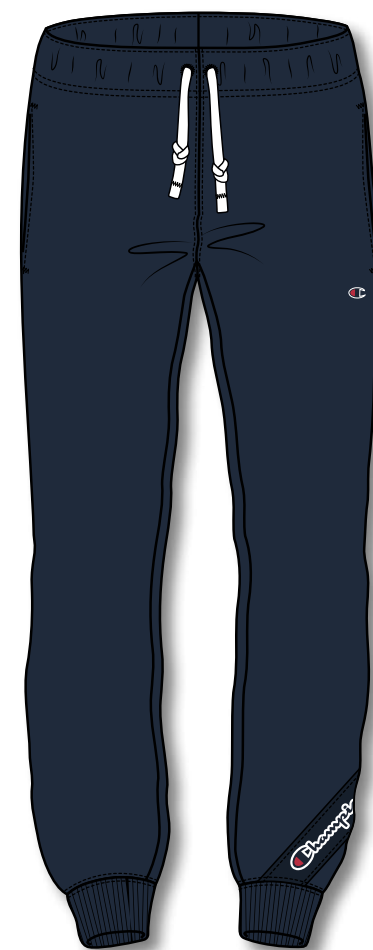


Heavy Organic Cotton Poly Fleece 340gr

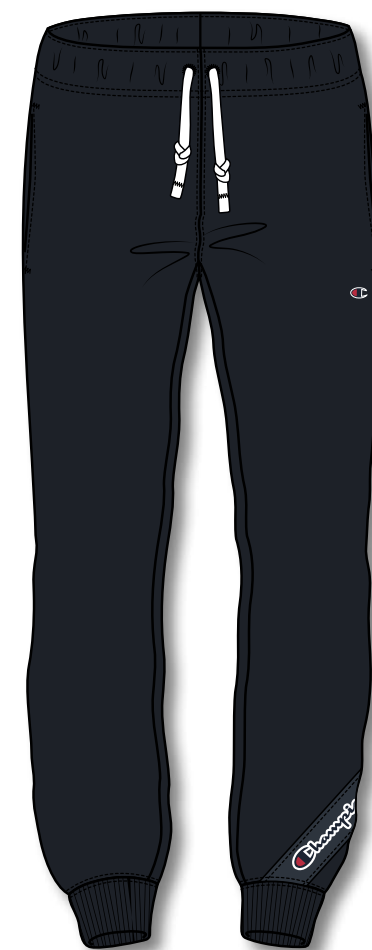
SPORTLEISURE



WHT  
WW001



NVB  
BS547



NBK  
KK001

216552





Athletic Organic Cotton jersey Combed 180gr



216553

**WHT**  
**WW001**

**NVB**  
**BS538**

**NBK**  
**KK001**

**CRD**  
**RS011**

**CDG**  
**GS091**

**BNN**  
**YS107**





- **FABRIC:** Heavy Organic Cotton Poly Fleece 67% Organic Cotton 33% Poly
- **FABRIC:** Athletic Jersey Combed (180gr) 100% Organic Cotton
- **FABRIC:** Peached Feel Crinkle (114gr) 100% Polyamide

**CS** CUSTOM FIT: TOPS AND PANT

**C** COMFORT FIT: TOPS

**SIZE RANGE:** XS-XXL



- **LOGO TECHNIQUE:** Small Tatami Embroidery for main logo

NYLON  
CONTRAST  
PIPING

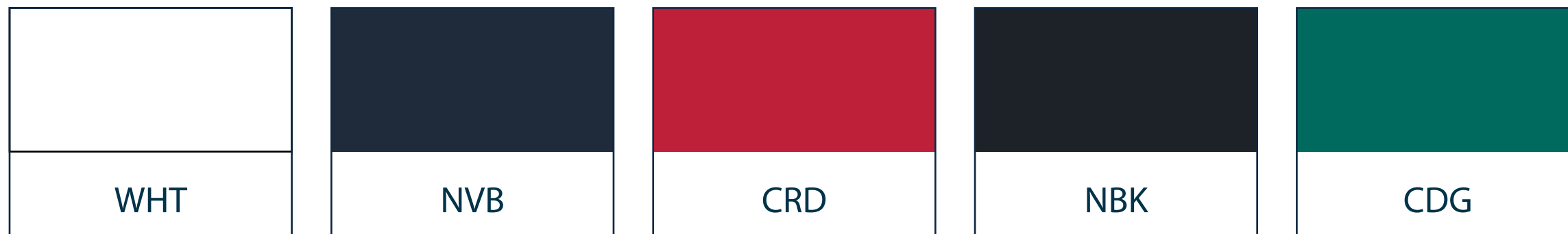
ASIMETRIC COLOR BLOCK DESIGN



FABRIC MIX



# COLOR CHART



## PANTONE COLOUR REFERENCES



Heavy Organic Cotton Poly Fleece 340gr + Poly Crinckle



216554  
NVB/CRD/WHT  
BS538



WHT/NBK/WWT  
WW001



NBK/NBK/WHT  
KK002



NBK/CDG/WHT  
KK001



216555  
NVB/CRD/WHT  
BS538



WHT/NBK/WWT  
WW001



NBK/NBK/WHT  
KK002



NBK/CDG/WHT  
KK001





Heavy Organic Cotton Poly Fleece 340gr + Poly Crinkle



NVB/CRD/WHT  
BS538



NBK/NBK/WHT  
KK001

216556

Heavy Organic Cotton Poly Fleece 340gr + Poly Crinkle



NVB/NVB/WHT  
BS538



NBK/NBK/WHT  
KK001



216557





Athletic Organic Cotton Jersey Combed 180gr + Poly Crinkle



216558

NVB/CRD/WHT  
BS538



WHT/NBK/WWT  
WW001



NBK/NBK/WHT  
KK002



NBK/CDG/WHT  
KK001



# ROCHESTER

Bookstore



 *Champion*





3NDL COVER STITCHINGS

FELT BIG LOGO CURVED

- **FABRIC:** Heavy Organic Cotton Poly Fleece 67% Organic Cotton 33% Poly
- **FABRIC:** Athletic Jersey Combed (180gr) 100% Organic Cotton

**C** COMFORT FIT: TOPS

**R** REGULAR FIT: PANTS

**SIZE RANGE:** XS-XXL



LITTLE JAQUARD LABEL ON BOTTOM RIB

- **LOGO THECNIQUE:** Felt Appication with contrast Cordonett Stitching



- **FABRIC:** Heavy Organic Cotton Poly Fleece 67% Organic Cotton 33% Poly
- **FABRIC:** Athletic Jersey Combed (180gr) 100% Organic Cotton

**CS** CUSTOM FIT: TOPS AND PANT

**SIZE RANGE:** XS-XXL



- **LOGO THECNIQUE:** Small Cordonett Embroidery

COLOR BLOCK



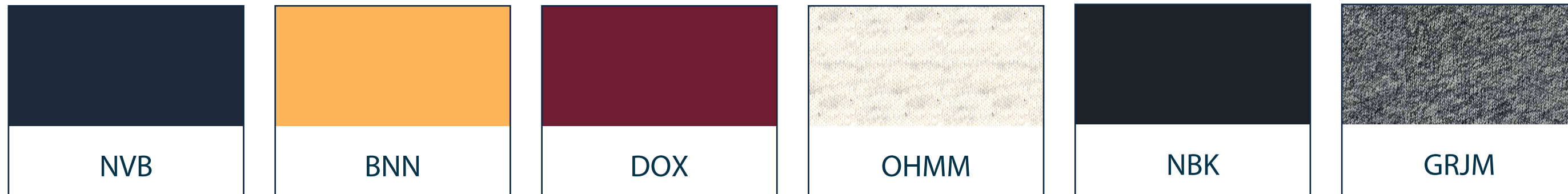
3NDL COVER STITCHINGS

LITTLE JAQUARD LABEL ON BOTTOM RIB





# COLOR CHART



## PANTONE COLOUR REFERENCES



Heavy Organic Cotton Poly Fleece 340gr



216569

NVB  
BS538



BNN  
YS107



DOX  
RS506



GRJM  
EM525



NBK  
KK001



216570

NVB  
BS538



BNN  
YS107



DOX  
RS506



GRJM  
EM525



NBK  
KK001





Heavy Organic Cotton Poly Fleece 340gr



216571

NVB/BNN  
BS538



OHMM/DOX  
EM005



DOX/NVB  
RS506



GRJM/NBK  
EM525



216913

NVB/BNN  
BS538



OHMM/DOX  
EM005



DOX/NVB  
RS506



GRJM/NBK  
EM525



Heavy Organic Cotton Poly Fleece 340gr



216572

NVB/BNN  
BS538



OHMM/DOX  
EM005



DOX/NVB  
RS506



GRJM/NBK  
EM525



Heavy Organic Cotton Poly Fleece 340gr



NVB  
BS538



GRJM  
EM525



NVB  
BS547



NBK  
KK001

216573



Athletic Organic Cotton jersey Combed 180gr



216575

NVB  
BS538



BNN  
YS107



DOX  
RS506



GRJM  
EM525



NBK  
KK001



216576

NVB/BNN  
BS538



OHMM/DOX  
EM005



DOX/NVB  
RS506



NBK/GRJM  
KK001





Heavy washed Stretch Cotton Twill 335gr

216997



NVB  
BS538



NBK  
KK001

216574



NVB  
BS538



NBK  
KK001





- **FABRIC:** Heavy Organic Cotton Poly Fleece 67% Organic Cotton 33% Poly
- **FABRIC:** Athletic Jersey Combed (180gr) 100% Organic Cotton

**CS** CUSTOM FIT: TOPS

**C** COMFORT FIT: TOPS

**R** REGULAR FIT: PANTS

**SIZE RANGE:** XS-XXL



- **LOGO TECHNIQUE:** Double contrast Outline Embroidery

PADDED AND STITCHED INSERTS

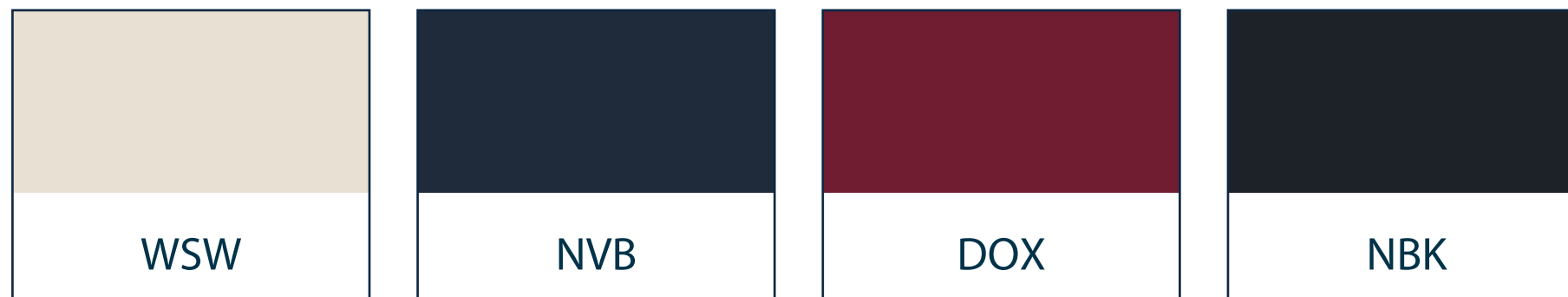
BIG EMBROIDERY LOGO ON BACK



CONTRAST KNITTED TAPE



# COLOR CHART



## PANTONE COLOUR REFERENCES



Heavy Organic Cotton Poly Fleece 340gr



216577

WSW/NVB  
WW034

NVB/DOX  
BS538

DOX/NVB  
RS506

NBK/WSW  
KK001



216578

WSW/NVB  
WW034

NVB/DOX  
BS538

DOX/NVB  
RS506

NBK/WSW  
KK001





Heavy Organic Cotton Poly Fleece 340gr



NVB  
BS538



NBK  
KK001

216579



Athletic Organic Cotton jersey Combed 180gr



216580

WSW/NVB  
WW034

NVB/DOX  
BS538

DOX/NVB  
RS506

NBK/WSW  
KK001



216581

WSW  
WW034

NVB  
BS538

DOX  
RS506

NBK  
KK001





# ROCHESTER

## POLAR



 *Champion*

Polar Y/D Lamb Effect (360gr)



214978  
C/O

NVB  
BS538

NBK  
KK001

WSW  
WW034

TYM  
GS538



216720

NVB/BNN  
BS538

WSW/DOX  
WW034

DOX/NVB  
RS506

NBK/NBK  
KK001



Explorer Polar Fleece (320gr)



NVB/CRD  
BS538



NBK/CDG  
KK002



NBK/NBK  
WW001

216721



NVB/BNN  
BS538



WSW/DOX  
WW034



EBN/NBK  
ES508

216722

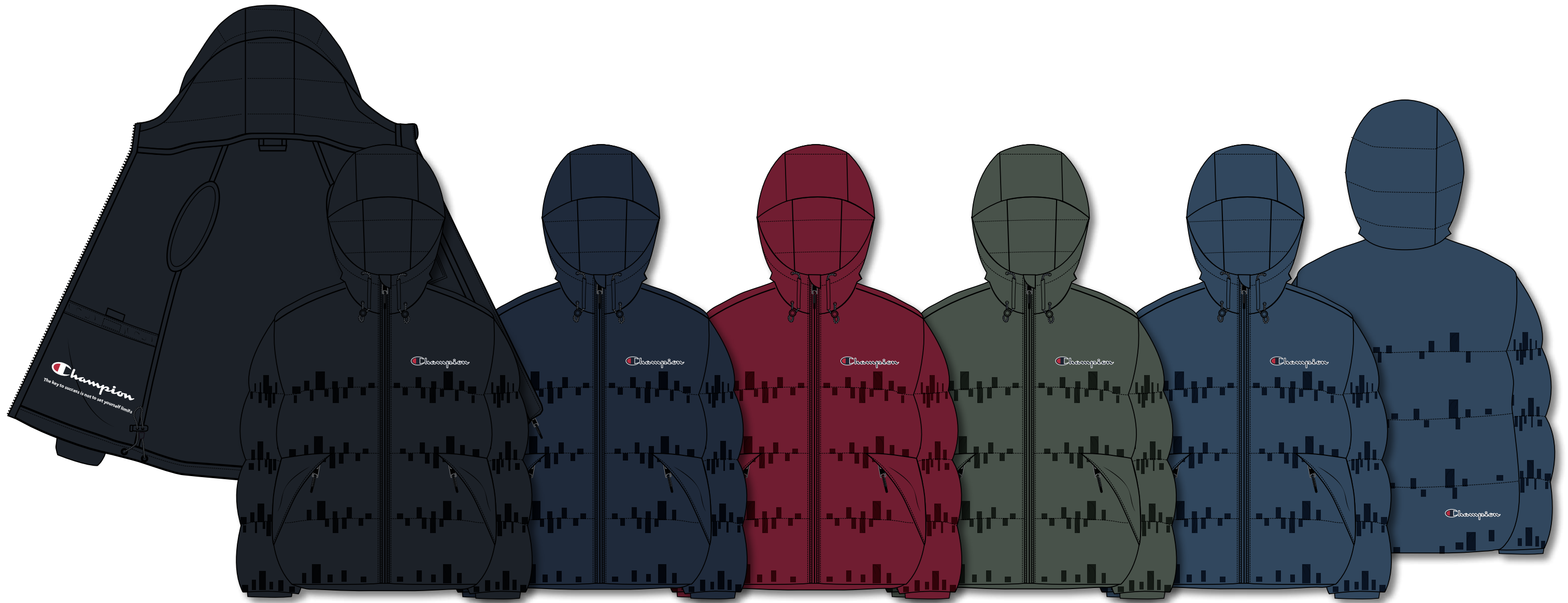


ROCHESTER

Outdoor



FINA-PS259BS



216731

**NBK**  
**KK001**

**NVB**  
**BS538**

**DOX**  
**RS506**

**TYM**  
**GS538**

**DARK**  
**BS504**

FINA-PS259BS



216732

NBK  
KK001

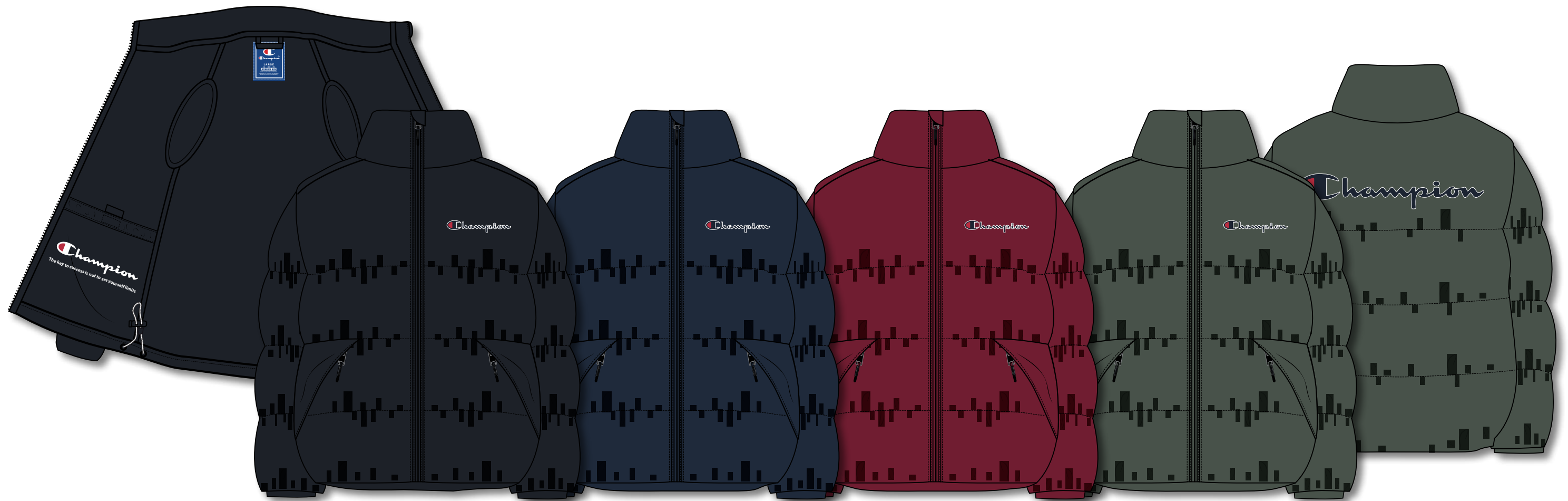
NVB  
BS538

DOX  
RS506

TYM  
GS538



FINA-PS259BS



216953

NBK  
KK001

NVB  
BS538

DOX  
RS506

TYM  
GS538

FINA-PS259BS



216733

NBK/CDG  
KK002

NVB/CRD  
BS538

WHT/NVB  
WW001

NBK/NBK  
KK001



FINA-PS259BS



216734

NVB/CRD  
BS538

CRD/NVB  
RS011

NBK/FIL  
KK001

J2043 + TEDDY



216735

DOX  
RS506

NVB  
BS538

NBK  
KK001